

N.B. : Misure dei pezzi  
DOPO CALIBRATURA !

NODO SUPERIORE



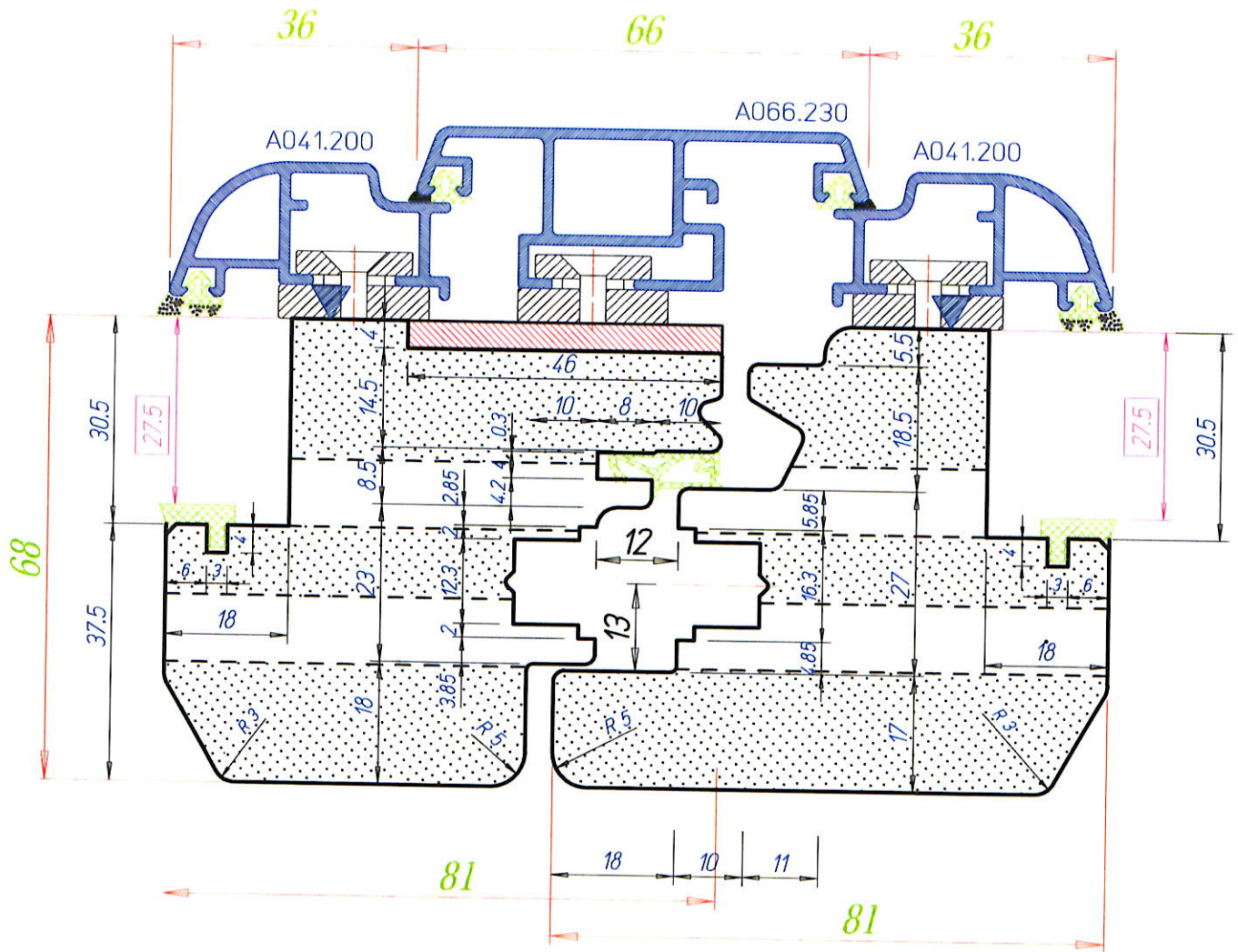
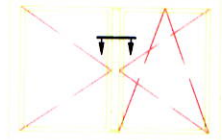
COMPANY  
WITH QUALITY SYSTEM  
CERTIFIED BY DNV  
ISO 9001:2008

Via dell'Artigiano, 57 (Z.I.) - 38068 Rovereto (TN) Italy  
Tel. 0039 0464 433183 Fax 436316  
Web: www.zuani.it E-Mail: info@zuani.it

Titolo \* FALEGNAMERIA GIAI GIULIO \*

Infisso L/A 66/68

Revis.	Data	Scala	Dis.	Data
		1:1	A.D.	21-05-2014
Verif.	Data	Cod.		
A.D.	21-05-2014	Dis.N°	A6668100.06	



N.B. : Misure dei pezzi  
DOPO CALIBRATURA !

NODO CENTRALE



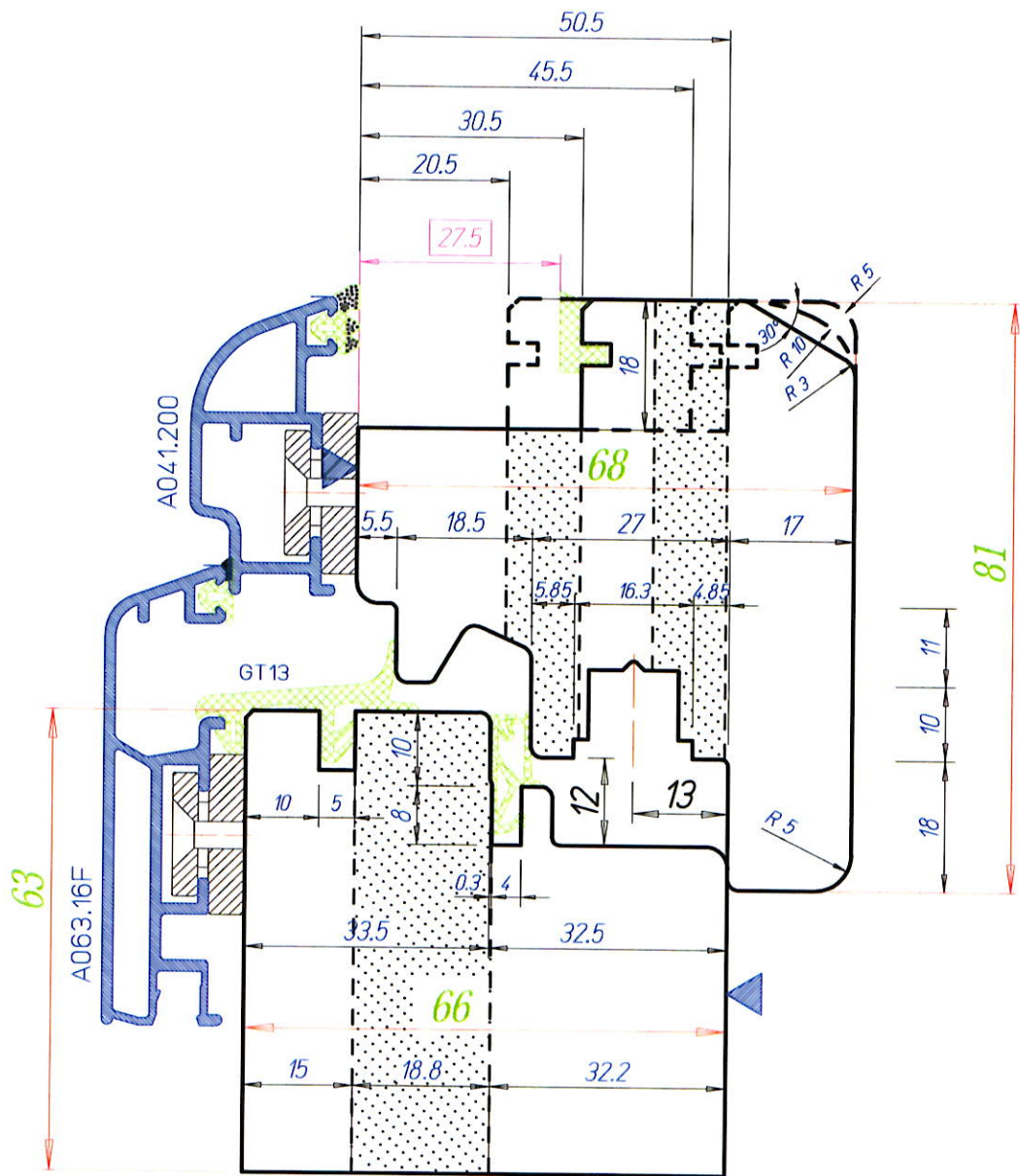
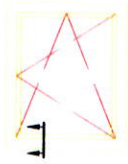
COMPANY  
WITH QUALITY SYSTEM  
CERTIFIED BY DNV  
ISO 9001:2008

Via dell'Artigiano,57 (Z.I.) - 38068 Rovereto (TN) Italy  
Tel. 0039 0464 433183 Fax 436316  
Web: www.zuani.it E-Mail: info@zuani.it

Titolo **\* FALEGNAMERIA GIAI GIULIO \***

**Infisso L/A 66/68**

Revis.	Data	Scala	Dis.	Data
		1:1	A.D.	21-05-2014
Verif.	Data	Cod.		
A.D.	21-05-2014	Dis.N°	A6668100.06	



N.B. : Misure dei pezzi  
DOPO CALIBRATURA !

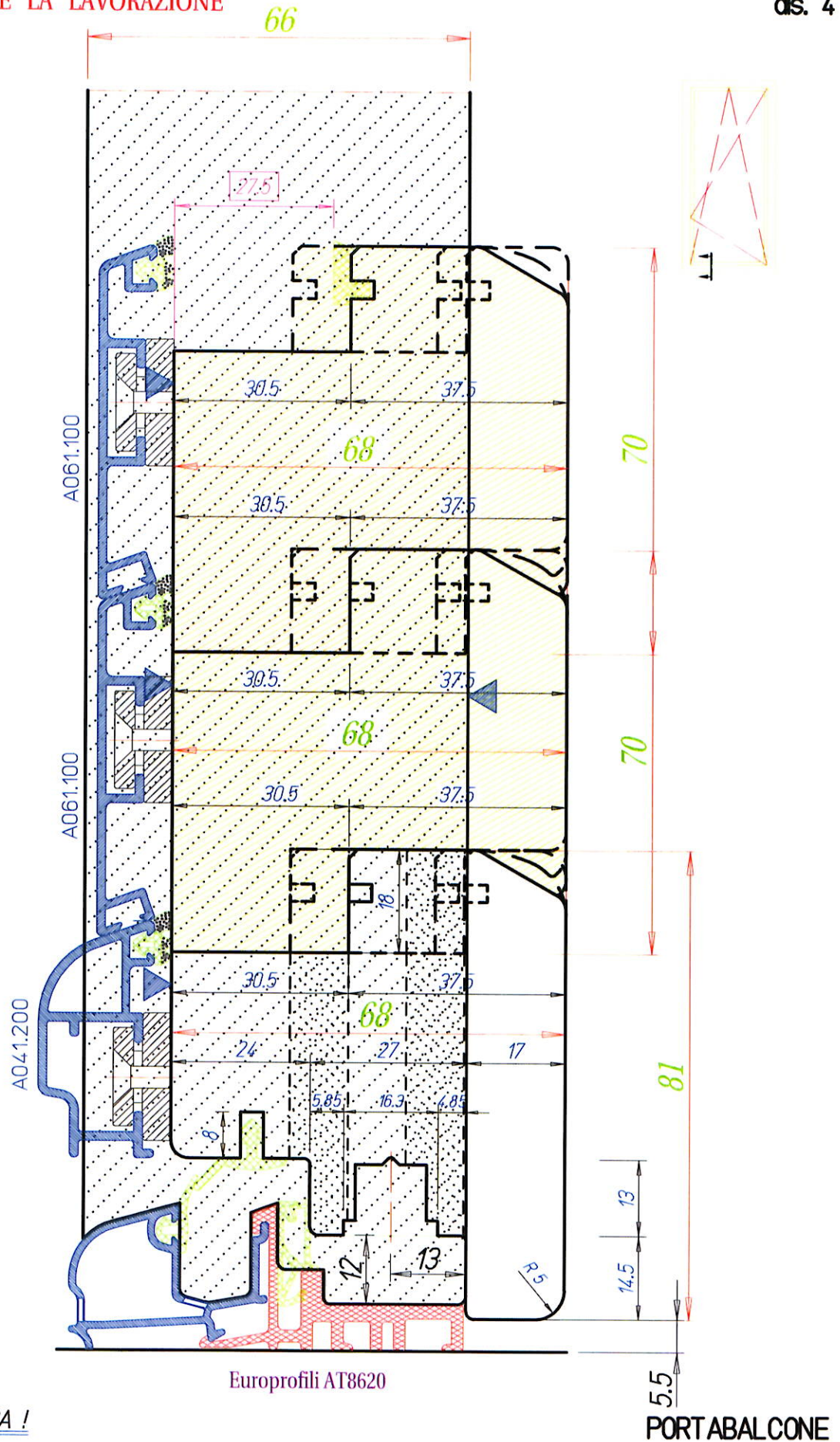
NODO INFERIORE



COMPANY  
WITH QUALITY SYSTEM  
CERTIFIED BY DNV  
= ISO 9001:2008 =

Via dell'Artigiano, 57 (Z.I.) - 38068 Rovereto (TN) Italy  
Tel. 0039 0464 433183 Fax 436316  
Web: www.zuani.it E-Mail: info@zuani.it

Titolo				* FALEGNAMERIA GIAI GIULIO *			
				Infisso L/A 66/68			
Revis.	Data	Scala	Dis	Data			
		1:1	A.D.	21-05-2014			
Verif.	Data	Cod. Dis.N°					
A.D.	21-05-2014	A6668100.06					



N.B. : Misure dei pezzi  
DOPO CALIBRATURA !

Europrofili AT8620

PORTABALCONE



COMPANY  
WITH QUALITY SYSTEM  
CERTIFIED BY DNV  
ISO 9001:2008

Via dell'Artigiano,57 (Z.I.) - 38068 Rovereto (TN) Italy  
Tel. 0039 0464 433183 Fax 436316  
Web: www.zuani.it E-Mail: info@zuani.it

Titolo <b>* FALEGNAMERIA GIAI GIULIO *</b>				
Infisso L/A 66/68				
Revis	Data	Scala	Dis.	Data
		1:1	A.D.	21-05-2014
Verif.	Data	Cod.	Dis.N°	
A.D.	21-05-2014		A6668100.06	